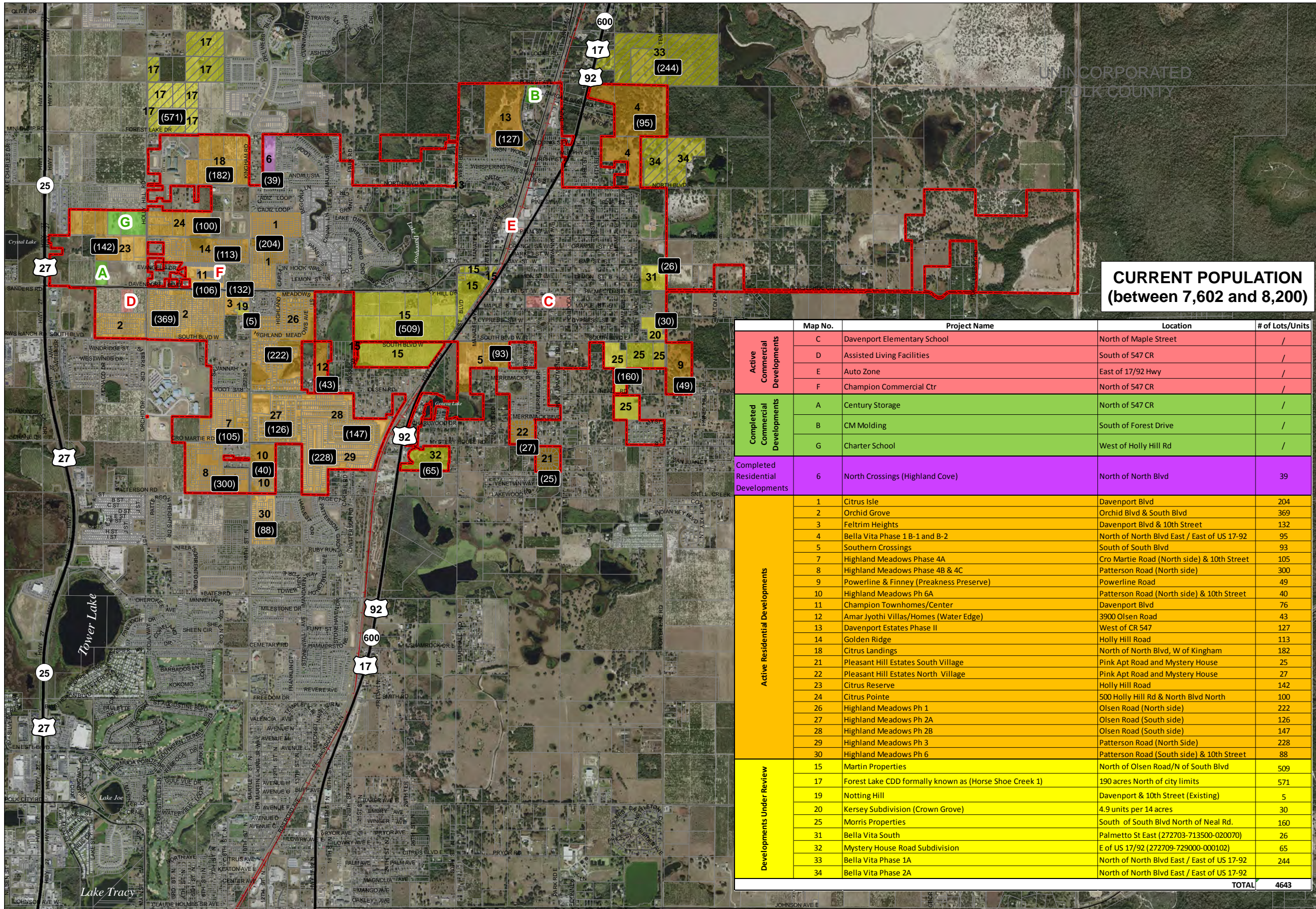
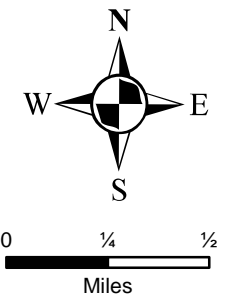


CITY OF DAVENPORT RESIDENTIAL AND COMMERCIAL DEVELOPMENTS (AERIAL PHOTO) MAP



- ### General Legend
- Developments Under Review
 - Active Residential Developments
 - Completed Residential Developments
 - Active Commercial Developments
 - Completed Commercial Developments
 - Property to be Annexed (Not Currently within City Limits)
 - Parcel Boundaries
 - Davenport City Boundary



**CURRENT POPULATION
(between 7,602 and 8,200)**

	Map No.	Project Name	Location	# of Lots/Units
Active Commercial Developments	C	Davenport Elementary School	North of Maple Street	/
	D	Assisted Living Facilities	South of 547 CR	/
	E	Auto Zone	East of 17/92 Hwy	/
	F	Champion Commercial Ctr	North of 547 CR	/
Completed Commercial Developments	A	Century Storage	North of 547 CR	/
	B	CM Molding	South of Forest Drive	/
	G	Charter School	West of Holly Hill Rd	/
Completed Residential Developments	6	North Crossings (Highland Cove)	North of North Blvd	39
Active Residential Developments	1	Citrus Isle	Davenport Blvd	204
	2	Orchid Grove	Orchid Blvd & South Blvd	369
	3	Feltrim Heights	Davenport Blvd & 10th Street	132
	4	Bella Vita Phase 1 B-1 and B-2	North of North Blvd East / East of US 17-92	95
	5	Southern Crossings	South of South Blvd	93
	7	Highland Meadows Phase 4A	Cro Martie Road (North side) & 10th Street	105
	8	Highland Meadows Phase 4B & 4C	Patterson Road (North side)	300
	9	Powerline & Finney (Preakness Preserve)	Powerline Road	49
	10	Highland Meadows Ph 6A	Patterson Road (North side) & 10th Street	40
	11	Champion Townhomes/Center	Davenport Blvd	76
	12	Amar Jyothi Villas/Homes (Water Edge)	3900 Olsen Road	43
	13	Davenport Estates Phase II	West of CR 547	127
	14	Golden Ridge	Holly Hill Road	113
	18	Citrus Landings	North of North Blvd, W of Kingham	182
21	Pleasant Hill Estates South Village	Pink Apt Road and Mystery House	25	
22	Pleasant Hill Estates North Village	Pink Apt Road and Mystery House	27	
23	Citrus Reserve	Holly Hill Road	142	
24	Citrus Pointe	500 Holly Hill Rd & North Blvd North	100	
26	Highland Meadows Ph 1	Olsen Road (North side)	222	
27	Highland Meadows Ph 2A	Olsen Road (South side)	126	
28	Highland Meadows Ph 2B	Olsen Road (South side)	147	
29	Highland Meadows Ph 3	Patterson Road (North Side)	228	
30	Highland Meadows Ph 6	Patterson Road (South side) & 10th Street	88	
Developments Under Review	15	Martin Properties	North of Olsen Road/N of South Blvd	509
	17	Forest Lake CDD formally known as (Horse Shoe Creek 1)	190 acres North of city limits	571
	19	Notting Hill	Davenport & 10th Street (Existing)	5
	20	Kersey Subdivision (Crown Grove)	4.9 units per 14 acres	30
	25	Morris Properties	South of South Blvd North of Neal Rd.	160
	31	Bella Vita South	Palmetto St East (272703-713500-020070)	26
	32	Mystery House Road Subdivision	E of US 17/92 (272709-729000-000102)	65
33	Bella Vita Phase 1A	North of North Blvd East / East of US 17-92	244	
34	Bella Vita Phase 2A	North of North Blvd East / East of US 17-92	244	
TOTAL				4643



City of Davenport
1 South Allapaha Avenue
PO Box 125, Davenport, FL 33836
Phone: (863) 419-3300 Fax: (863) 419-3302
E-Mail: info@davenportfl.org



CENTRAL FLORIDA REGIONAL PLANNING COUNCIL
555 East Church Street, Bartow, FL 33830-3931
P.O. Box 2089, Bartow, FL 33831-2089
(863) 534-7130 - Fax (863) 534-7138
www.cfrpc.org

City Boundary Updated per
Ordinance NO. 934
July 6, 2020

**MAP UPDATED
August 28, 2020**

DISCLAIMER:
The information on this map should be considered conceptual and subject to change. This map is not a survey.

Data Sources:
Central Florida Regional Planning Council
Florida Department of Transportation
Polk County Property Appraiser
City of Davenport