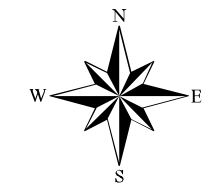


TE MAP 1 - CITY OF DAVENPORT - 2030 FUTURE FUNCTIONAL CLASSIFICATION & MAINTENANCE RESPONSIBILITY

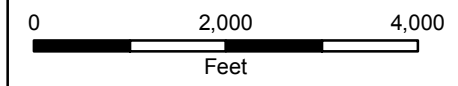
Legend

FUNCTIONAL CLASSIFICATION & MAINTENANCE RESPONSIBILITY

- Principal Arterial (State)
- Urban Collector (County)
- City Proposed Improvements
- City Proposed New Roads
- Local Roads
- US Roads
- State Roads
- County Roads
- Railroads
- Parcels
- Water Bodies
- Davenport City Limits



1:24,000
1 inch = 2,000 feet



CITY OF DAVENPORT
1 South Alapaha Avenue
PO Box 125, Davenport, FL 33836
Phone: (863) 419-3300 Fax: (863) 419-3302
E-Mail: info@davenportfl.org

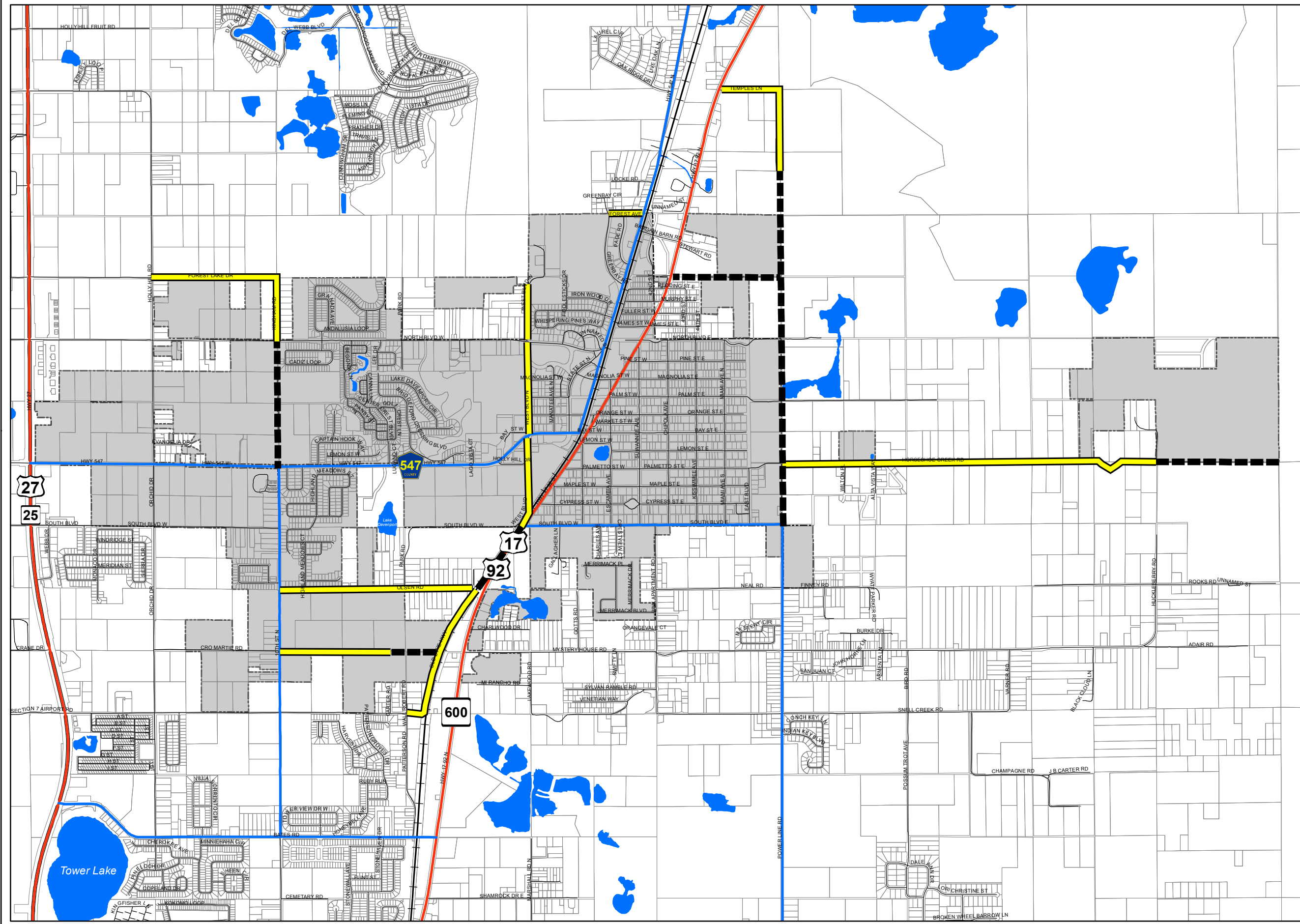


CENTRAL FLORIDA REGIONAL PLANNING COUNCIL
555 East Church Street, Bartow, FL 33830-3931
P.O. Box 2089, Bartow, FL 33831-2089
(863) 534-7130 - SUNCOM 515-2025
Fax (863) 534-7138 - Toll Free (800) 297-8041
www.cfrpc.org

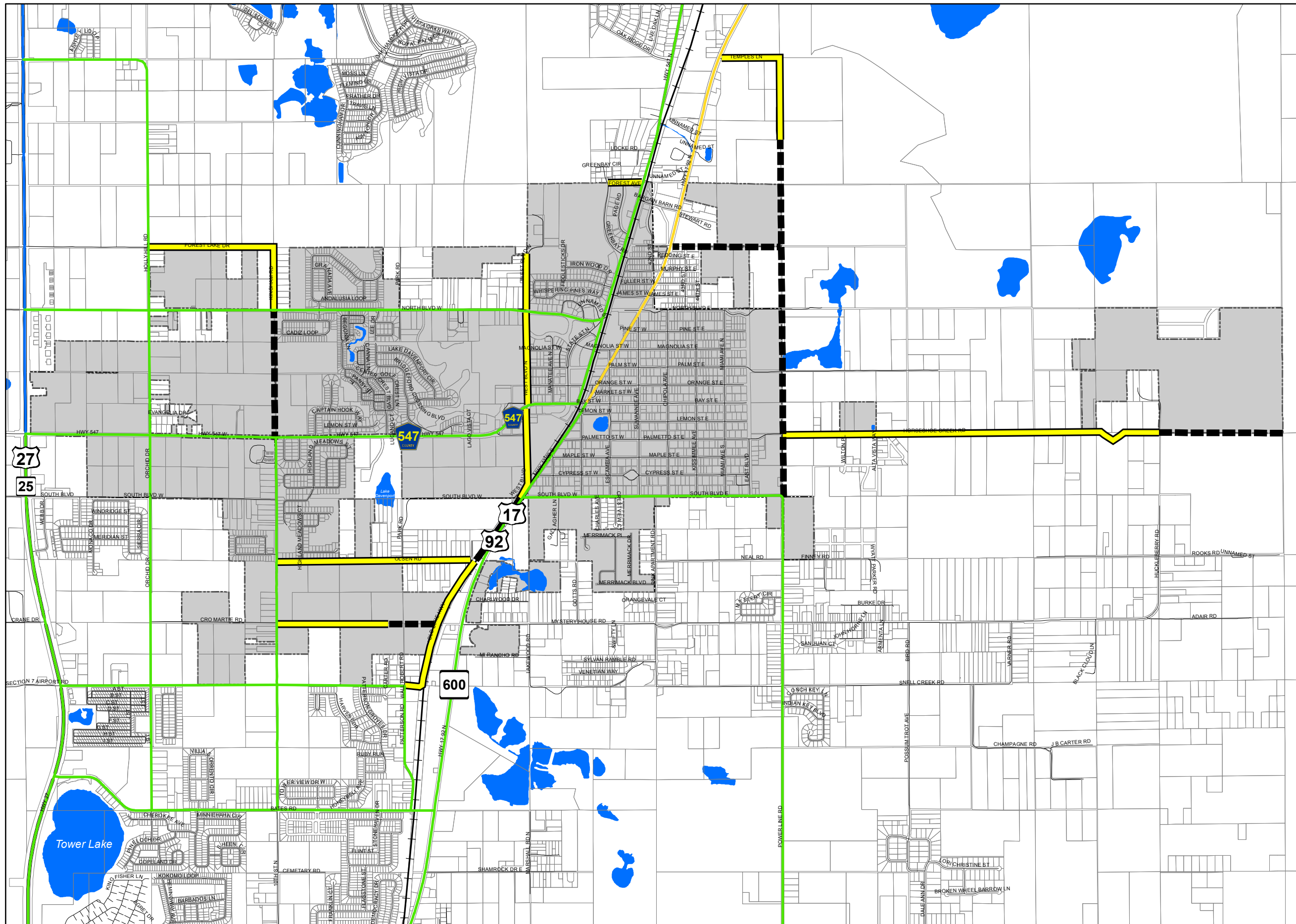
Adoption Date:
October 25, 2010

DISCLAIMER:
The information on this map should be considered conceptual and subject to change. This map is not a survey.

Data Sources:
City of Davenport
Polk County Property Appraiser
Florida Department of Transportation
Central Florida Regional Planning Council
Polk County Transportation Planning Organization



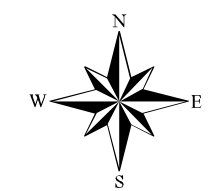
TE MAP 3 - CITY OF DAVENPORT - 2030 FUTURE LEVEL-OF-SERVICE



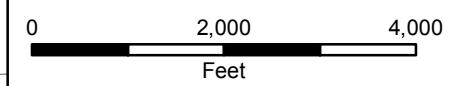
Legend

FUTURE LEVEL-OF-SERVICE

- A
- B
- C
- D
- E
- F
- City Proposed Improvements
- City Proposed New Roads
- Local Roads
- US Roads
- State Roads
- County Roads
- Railroads
- Parcels
- Water Bodies
- Davenport City Limits



1:24,000
1 inch = 2,000 feet



CITY OF DAVENPORT
1 South Alapaha Avenue
P.O. Box 126, Davenport, FL 33836
Phone: (863) 419-3300 Fax: (863) 419-3302
E-Mail: info@davenportfl.org



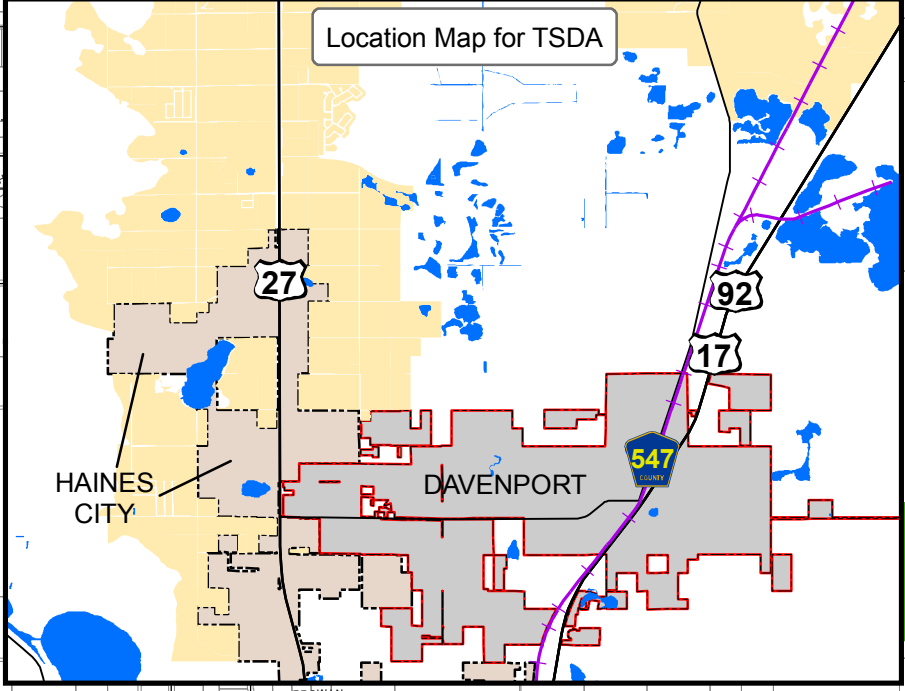
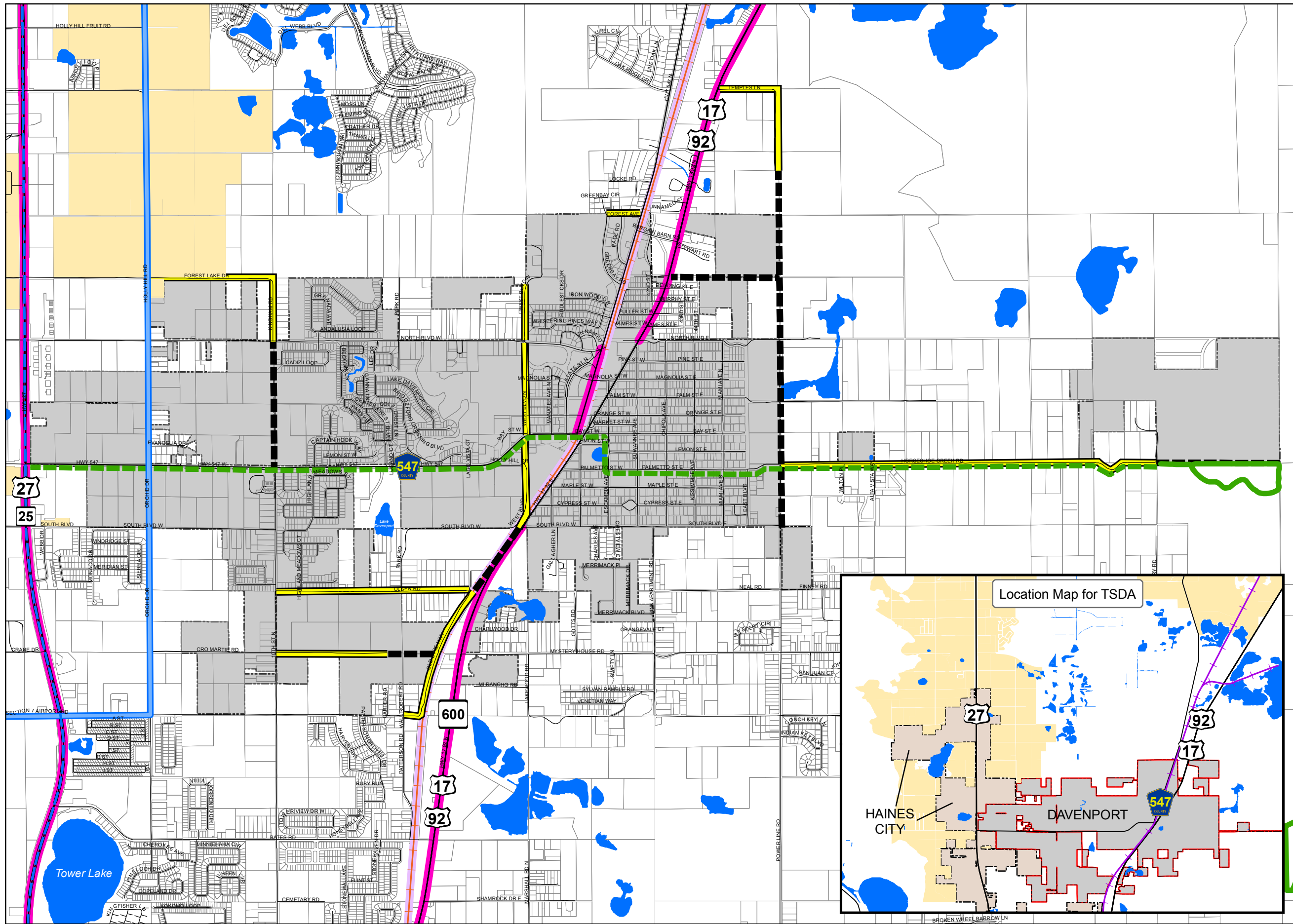
CENTRAL FLORIDA REGIONAL PLANNING COUNCIL
555 East Church Street, Bartow, FL 33830-3931
P.O. Box 2089, Bartow, FL 33831-2089
(863) 534-7130 - SUNCOM 515-2025
Fax (863) 534-7138 - Toll Free (800) 297-8041
www.cfrpc.org

Adoption Date:
October 25, 2010

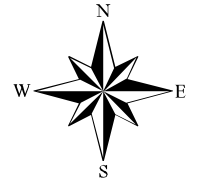
DISCLAIMER:
The information on this map should be considered conceptual and subject to change. This map is not a survey.

Data Sources:
City of Davenport
Polk County Property Appraiser
Florida Department of Transportation
Central Florida Regional Planning Council
Polk County Transportation Planning Organization

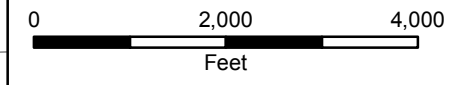
TE MAP 4 - CITY OF DAVENPORT - 2030 FUTURE TRAFFIC CIRCULATION



- ### Legend
- Existing Trails
 - Proposed Trails
 - Existing Transit Routes
 - Proposed Transit Routes
 - North Ridge Planned Local Circulator Bus Route
 - Bicycle Facilities
 - Proposed Passenger Rail
 - City Proposed New Roads
 - City Proposed Road Improvements
 - Transit Support Development Area (TSDA)
 - US Roads
 - State Roads
 - County Roads
 - Local Roads
 - Major Roads
 - Railroads
 - Parcels
 - Water Bodies
 - Davenport City Limits



1:24,000
1 inch = 2,000 feet



CITY OF DAVENPORT
1 South Alapaha Avenue
P.O. Box 126, Davenport, FL 33836
Phone: (863) 419-3300 Fax: (863) 419-3302
E-Mail: info@davenportfl.org



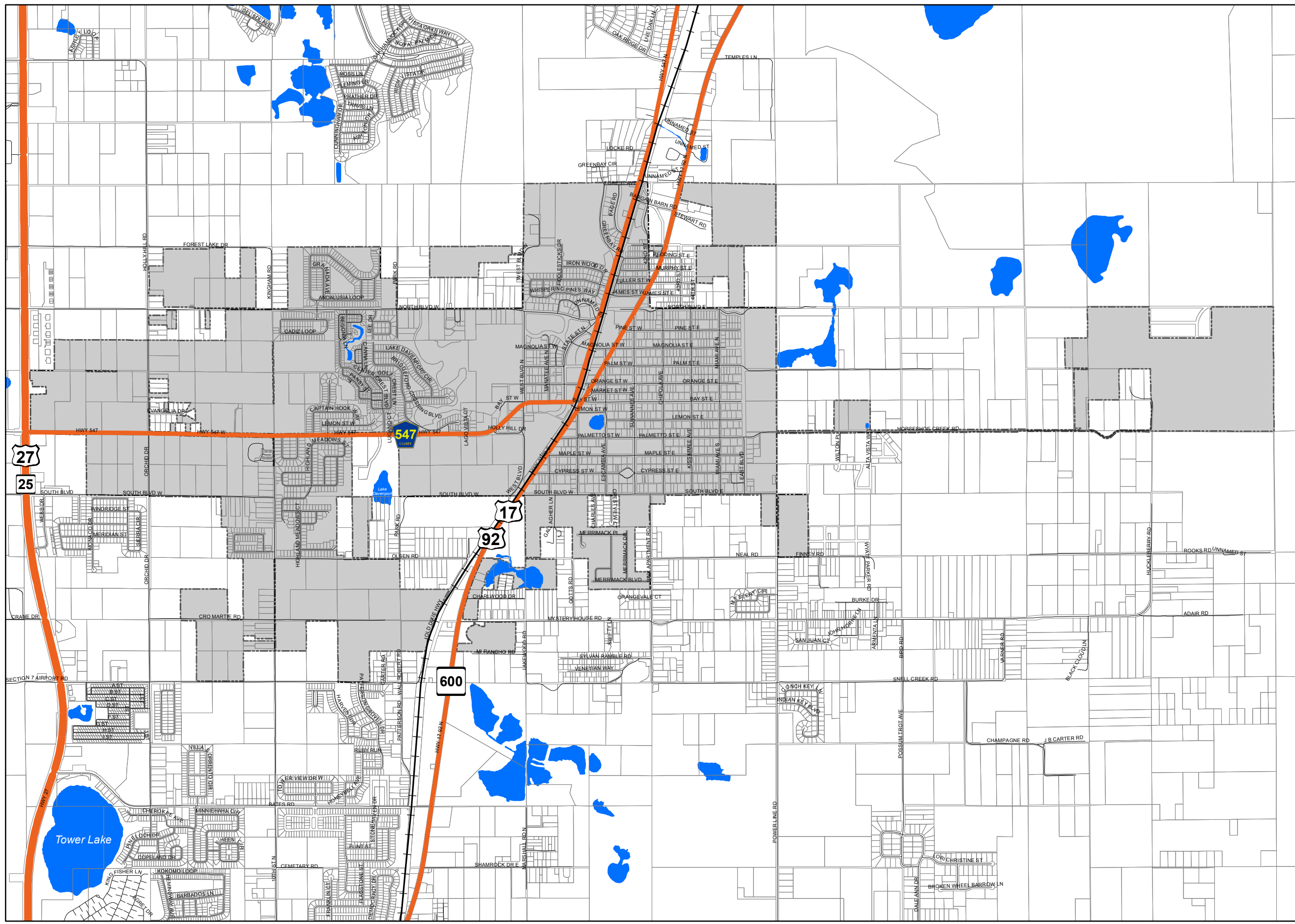
CENTRAL FLORIDA REGIONAL PLANNING COUNCIL
555 East Church Street, Bartow, FL 33830-3931
P.O. Box 2089, Bartow, FL 33831-2089
(863) 534-7130 - SUNCOM 515-2025
Fax (863) 534-7138 - Toll Free (800) 297-9041
www.cfrpc.org

Adoption Date:
October 25, 2010

DISCLAIMER:
The information on this map should be considered conceptual and subject to change. This map is not a survey.

Data Sources:
City of Davenport
Polk County Property Appraiser
Florida Department of Transportation
Central Florida Regional Planning Council

TE MAP 5 - CITY OF DAVENPORT - 2030 EVACUATION ROUTES

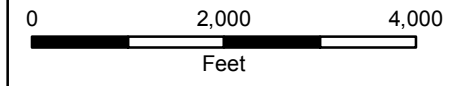


Legend

- Evacuation Routes
- US Roads
- State Roads
- County Roads
- Local Roads
- Railroads
- Parcels
- Water Bodies
- Davenport City Limits



1:24,000
1 inch = 2,000 feet



CITY OF DAVENPORT
1 South Alapaha Avenue
PO Box 125, Davenport, FL 33836
Phone: (863) 419-3300 Fax: (863) 419-3302
E-Mail: info@davenportfl.org



CENTRAL FLORIDA REGIONAL PLANNING COUNCIL
555 East Church Street, Bartow, FL 33830-3931
P.O. Box 2089, Bartow, FL 33831-2089
(863) 534-7130 - SUNCOM 515-2025
Fax (863) 534-7138 - Toll Free (800) 297-8041
www.cfrpc.org

Adoption Date:
October 25, 2010

DISCLAIMER:
The information on this map should be considered conceptual and subject to change. This map is not a survey.

Data Sources:
City of Davenport
Polk County Property Appraiser
Florida Department of Transportation
Central Florida Regional Planning Council
Polk County Transportation Planning Organization